



J2-72 Joey

Low Level Order Picker

Patents Pending



CAPACITY

- 2,200 lbs. @ 24" LC on forks
- 300 lbs. operators compartment

BATTERY INFORMATION

Compartment: 29.1" x 11" x 30"
SB-175 Red Connector A12
Minimum battery weight 700 lbs.

PERFORMANCE

MAXIMUM LIFT HEIGHTS

48" operator PLATFORM, 72" forks

Maximum Speeds

Travel: Variable from 0 mph to 4.5 mph

LIFT: Up to 32 fpm

WHEELS / TIRES

- (1) 9" x 3" polyurethane drive tire
- (2) 3" x 2" polyurethane stability casters
- (2) 5.9" x 3.5" polyurethane load wheels

ELECTRICAL

24-Volt travel controller. LCD dash board displays hour meter, battery state of charge, travel speed, drive wheel directional indicator, and fault codes.

AC-drive motor provides high torque throughout the entire drive range. The brushless design of the AC motor drastically reduces maintenance costs while extending duty cycle. Travel speed remains constant relative to throttle position regardless of the load on truck.

Dual travel controls are provided for forks forward or forks trailing drivers stances and automatically change logic when active to ensure consistent steering during operation. (4) selectable travel speed settings and a global turtle travel speed setting can be used to tailor equipment performance to the experience level of the operator and use.

MAST

Heavy duty I-beam design provides operator with excellent stability at height. Steel mast channels and side mounted lift cylinders increase total vehicle capacity and service life.

CHASSIS

Three point chassis design with along with 180° drive motor steering arc provides exceptional maneuverability. Power head mounted stability casters add additional truck stability and operator confidence at working heights.

OPERATOR COMPARTMENT

Ergonomic fingertip controls for travel, lift, and lower functions provide the operator with logical intuitive drive characteristics while traveling at elevation or lowered.

The operator compartment is designed for comfort and features a ergonomic floormat and cushion backrest. Retractable compartment guard-rails allow for easy egress from either side of the vehicle.

A large plexiglass mast guard and rear window are provided to ensure good visibility during forks trailing operation.

REGENERATIVE BRAKES

Regenerative braking is applied when the operator removes their hand from travel control or when plugging occurs. An electromagnetic parking brake is applied after the truck is stopped.

STANDARD FEATURES

- Dual travel controls for forks forward or forks trailing stances
- Rear plexiglass mast window for improved visibility during forks trailing operation
- 42" long x 4" wide forks
- 12v DC and USB ports
- Non-marking tires
- Rear flashing light
- Battery compartment rollers
- Hydraulic front mini mast
- Low 9" step height compartment

OPTIONAL EQUIPMENT

- 224 AH Maintenance Free Battery Pack w/110V Plug-In Charger
- 24 volt Industrial battery
- 24 volt external charger

STANDARD OPERATOR CONTROLS

Left Hand

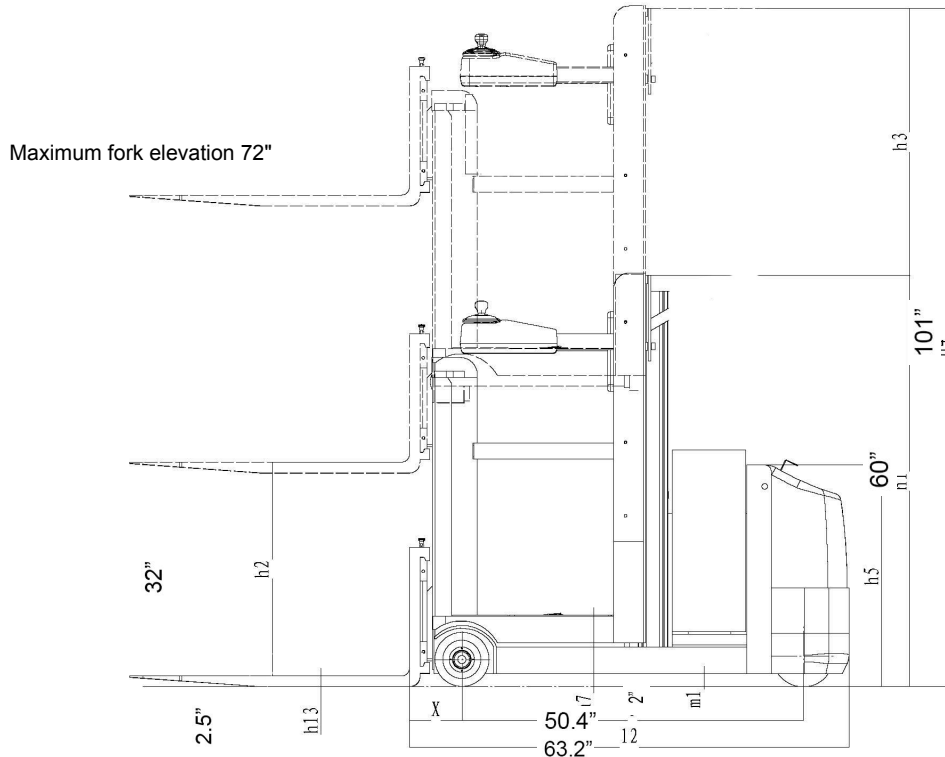


360°
Tiller Steering

Right Hand

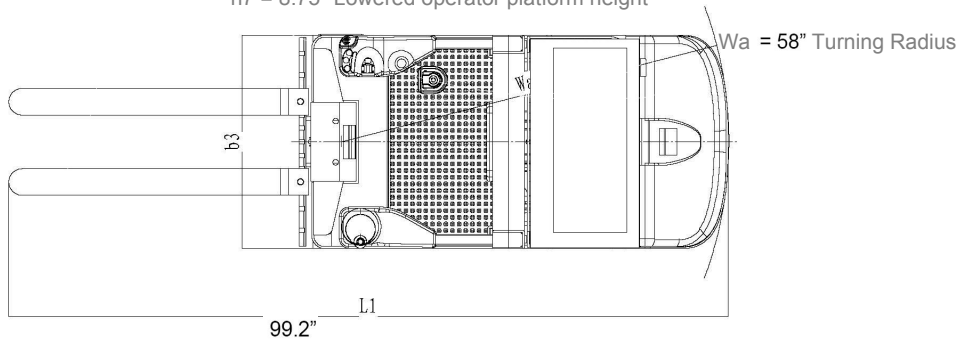


Travel, Lift, Lower, Key Switch and EPD Controls



J2 -72 forks trailing controls are built into the operator compartment backrest and activated by a laser which confirms operator hand position.

h7 = 8.75" Lowered operator platform height



Model #	Mast	Lift Height	Col Height	Extended Height	Overall Width	Overall Length	³ Weight Chassis Only
		h2+h3	h1	h4	b3 / b1	L1	
J2-72	Single Stage	72	60.0	101	31.5	99.2	2,900lbs

All measurements in standard "inch" units, for additional specifications or performance details consult factory

³ Estimated shipping weight without battery



Big Lift LLC
www.bigloeforklifts.com
630-916-2600

Certification
All units are built to be in compliance with the Occupational Safety & Health Act (OSHA) ANSI Compliant - Patents Pending
Big Lift LLC will not assume liability for injuries or damage arising from, or caused by, the removal of any safety devices from their vehicles by user. Because of the Big Lift LLC policy of continuing product improvements, specifications are subject to change without notice.