

S26

2,600 LB. CAPACITY

INTEGRATED LITHIUM-ION WALKIE STRADDLE STACKER



SPECIFICATIONS

FEATURES



OPERATOR CONTROLS

Offset steer arm provides excellent line of sight for operators and allows them to easily walk astride the vehicle during travel. The offset design also allows the vehicle to comfortably right-angle stack standard pallets in aisles under seven feet wide.

Travel, lift and lower functions are located in the ergonomic operator handle. All operator controls are accessible without having to remove hand from the handle.

Angle grips are designed to allow easy operation with either hand. Wrap-around guard, storage compartment with USB port, reversing switch, thumb control, and horn are standard. Low-mounted steer arm offers excellent operator comfort and minimum steering effort.

CHASSIS AND MAST

Heavy-duty, welded steel chassis and I-beam channel mast for added durability and service life. Class II ITA 16" x 32" adjustable carriage comes standard with 42" x 4" x 1.6" forks and a 36" load backrest.

Telescoping mast includes a plexiglass mast guard and provides a 124" maximum fork elevation with dual cylinders. Mast also features standard electronic lift limit switch, soft landing forks and automatic speed reduction when lifting for maximum operating safety and perfect handling of fragile loads.

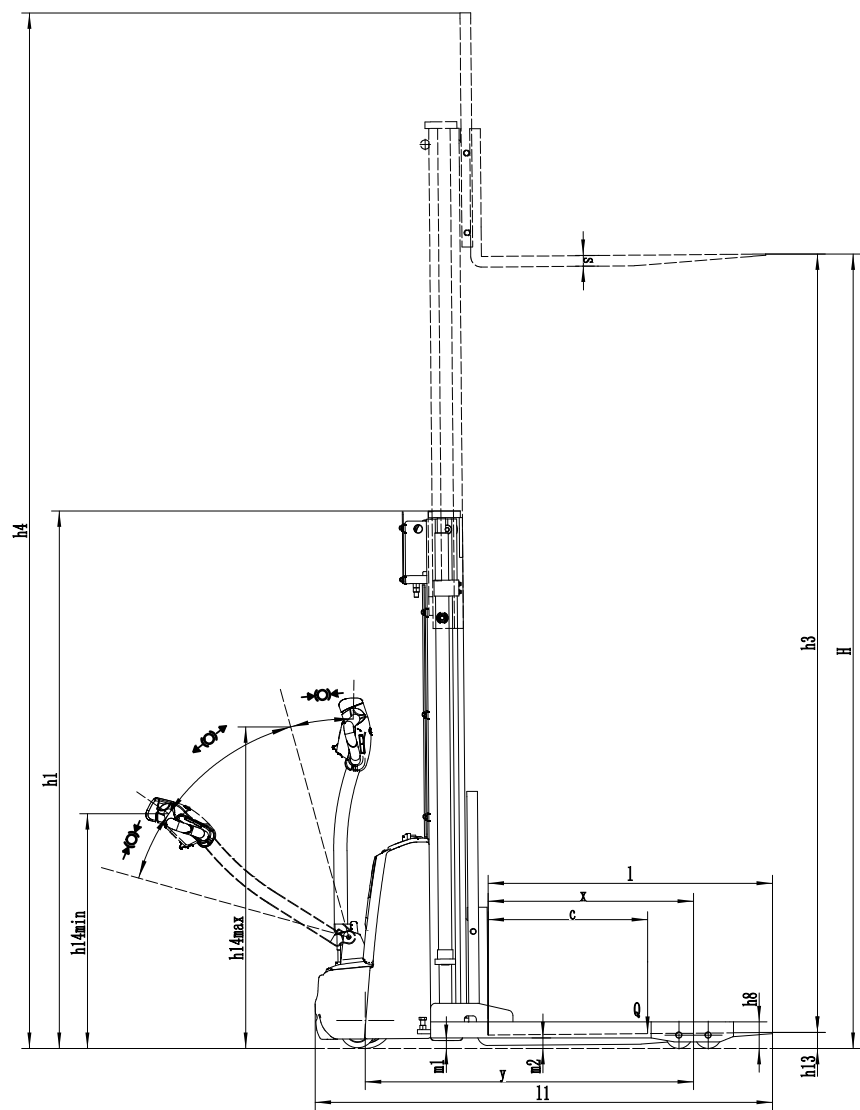
3.25" wide, adjustable straddle legs allow for configurations to fit various-sized pallets. Build in jackstand allows easy adjustment of straddle widths, which can be set from 39" to 48" in 3" increments.

Unit features tandem load wheels with fully enclosed wheel guards, while flush mounted axles prevent wheel and axle damage.

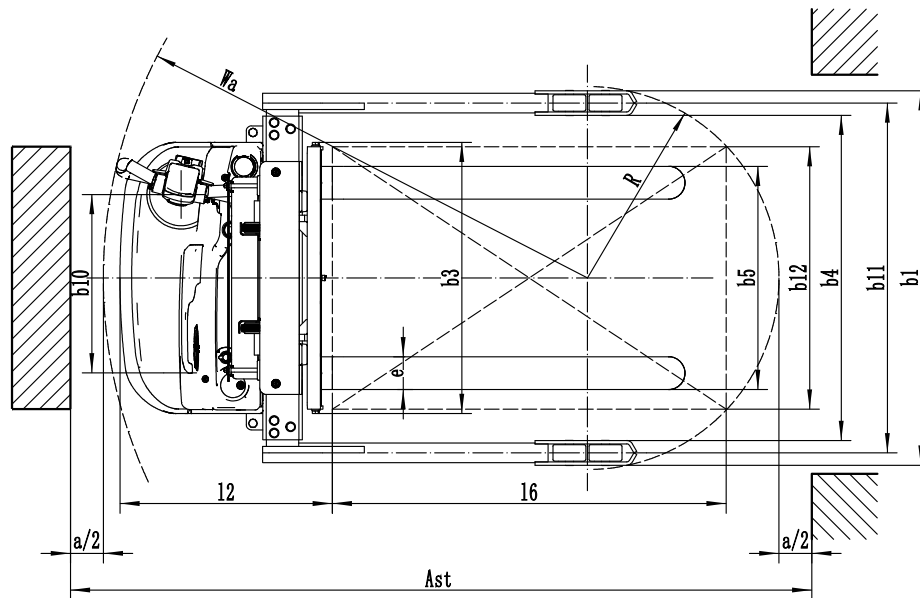
SERVICEABILITY

Removable, two piece power head cover allows for easy maintenance and access to all wheel components.

SPECIFICATIONS



Distinguishing mark	Manufacturer			Big Joe
	Model			S26
	Drive			Electric
	Load capacity	Q	lb.	2,600
	Load center distance	c	in.	24
	Load distance, center of drive axle to fork	x	in.	30.4
	Wheelbase	y	in.	48.6
Svc weight	Service weight			lb. 1808
	Axle loading, laden (front/rear)			lb. 1698 / 2756
	Axle loading, unladen (front/rear)			lb. 1323 / 485
Wheels/chassis	Wheel type			Polyurethane
	Wheel size, front		in.	8.5 x 3
	Wheel size, rear		in.	4 x 2
	Additional wheels		in.	5 x 2
	Wheels, number (front/rear) - x=drive wheels			1x, 1/4
	Tread width, front	b10	in.	21.4
	Tread width, rear	b11	in.	42.1 / 45.1 / 48.1 / 51.1



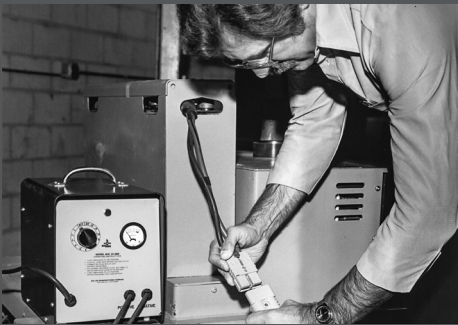
Dimensions	Max lift height	H	in.	149
	Retracted mast height	h1	in.	83
	Extended mast height	h4	in.	185
	Height of tiller handle in drive position (min / max)	h14	in.	30 / 45
	Height of base legs	h8	in.	4
	Lowered height	h13	in.	2.5
	Overall length	l1	in.	67.7
	Length to face of forks	l2	in.	25.6
	Overall width	b1/b2	in.	45.5 / 48.5 / 51.5 / 54.5
	Fork dimensions	s x e x l	in.	1.6 x 4 x 42
	Fork carriage width	b3	in.	32.5
	Fork spread	b5	in.	7.9 - 30.7
	Distance between base legs and loading surfaces	b4	in.	39 / 42 / 45 / 48
	Ground clearance, laden, below mast	m1	in.	1.2
	Ground clearance, center of wheelbase	m2	in.	1.6
Performance	Right angle stack (assumes 40" W x 48" D pallet)	Ast	in.	84.6" + Clearance
	Turning radius	Wa	in.	58
	Travel speed, laden/unladen		mph	2.5 / 2.8
	Lifting speed, laden/unladen		fpm	29.5 / 47.2
	Lowering speed, laden/unladen		fpm	39.4 / 41.3
Electrical	Max gradeability, laden/unladen		%	3 / 10
	Service brake			Electromagnetic
	Drive motor rating S2 60min		kW	0.7
	Lift motor rating at S3 15%		kW	3
	Battery voltage / nominal capacity		V/Ah	24/105
Additional	Battery weight		lb.	135
	Type of drive control			DC
	Steering design			Mechanical
	Sound pressure level at operator's ear		dB(A)	74
	Charger output current		A	30

Mast type	Lift height h3 + h13 (in)	Height, mast lowered h1 (in)	Free lift h2 (in)	Height, mast extended h4 (in)	Weight (lb)
Mono mast 2-Stage limited free lift	62	76.8	40.5	98	1563
	106	73.8	-	142	1760
	124	83	-	160	1808
	149	97.5	-	185	1856

Key Differences Between PDS25, S26 and S22

		PDS25	S26	S22
Lifting speed, laden / unladen	fpm	17.6 / 30.9	29.5 / 47.3	20 / 39
Lowering speed, laden / unladen	fpm	17.8 / 18.4	41.3 / 41.3	21 / 21
Travel speed, laden / unladen	mph	3.1 / 3.4	2.5 / 2.8	2.5 / 3.1
Drive motor rating S2 60 min	kW	1.1	0.7	0.7
Lift motor rating at S3 15%	kW	2.2	3	2.2
Max. gradeability, laden / unladen	%	8 / 16	3 / 10	3 / 10
Overall Length	in.	76.7	67.7	65.5
Service weight	lb.	2530	1808	1500
Battery	-	24V 210Ah lead	24V 105Ah Li-Ion	24V 85Ah lead
Visibility	-		Best	
Traction	-	Best	Improved vs. S22	
Drive tire position	-	Centered	Offset	Offset





Established in 1951, Big Joe is a customer-driven North American material handling equipment company. We distribute innovative products for in-between-handling applications, purpose-built counterbalanced lithium forklifts, and market-leading autonomous solutions. Based in Madison, Wisconsin, we provide engineering expertise, customer service, aftermarket parts, and warranty support to our extensive dealer network and customers.



Certification: Big Joe lift trucks are built in compliance with ANSI B56.1 and OSHA section 1910.178(A)(2). Lift truck specifications are subject to change without notice. Any specifications critical to the intended application of the forklift should be reviewed with your Big Joe dealer. Images may show optional equipment not available in all regions.



630-916-2600
sales@bigjoeforklifts.com
bigjoeforklifts.com